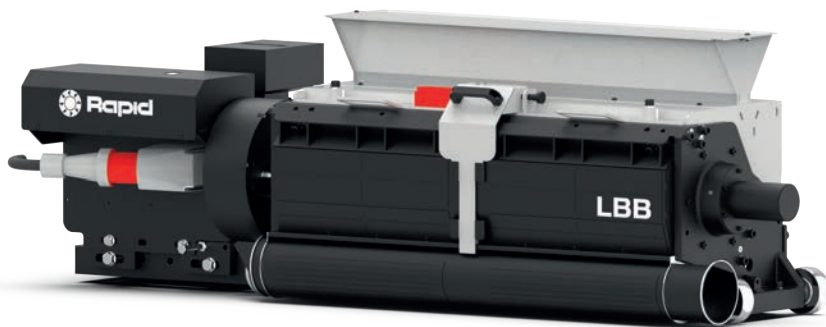


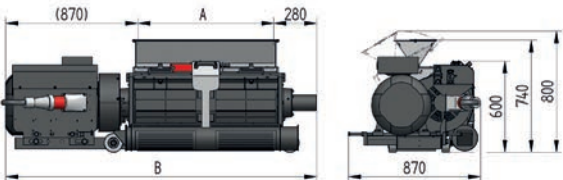
300 LBB

Rapid 300-LBB (Low Built Base) has a very low infeed height. The areas of use are primarily in the packaging industry for granulating skeletal waste and sheet. The granulator can either be connected in-line to the production machine with a roll-feeder and loop control or placed under the line with a simple funnel for freely falling cut waste sheets. 3 widths are available in standard version.

- Highest quality regrind.
- Low infeed height, only 600 mm.
- Available with various infeed options for different applications.
- 3 widths, 900, 1200 and 1500 mm.
- Powerful operation with motors up to 30 kW.
- Constant Cutting Circle (CCC).



Specifications		300-90	300-120	300-150
Rotor diameter	mm	300	300	300
Rotor type		3-blade, open		
Rotating knives		6 (2x3)	8 (4x2)	10 (5x2)
Fixed knives		6	6	9
Cutterhouse Tagential	mm	285x900	285x1200	285x1500
Motor (Standard)	kW	7,5	11	11
Motor (Optional)	kW	7,5 / 11 / 15 / 18,5 / 22 / 30		
Dimensions				
A	mm	900	1200	1500
B	mm	2100	2400	2700



300 LBB